



MOST PEOPLE PRODUCE

4.4

POUNDS OF

TRASH PER DAY THAT RESULTS IN ABOUT 1.5 TONS OF SOLID WASTE PER YEAR.

IF YOU THROW AWAY YOUR ALUMINIUM CANS, THEY CAN STAY IN THAT CAN FORM FOR UP

500

YEARS OR MORE- SO RECYCLING IS THE WAY TO GO.



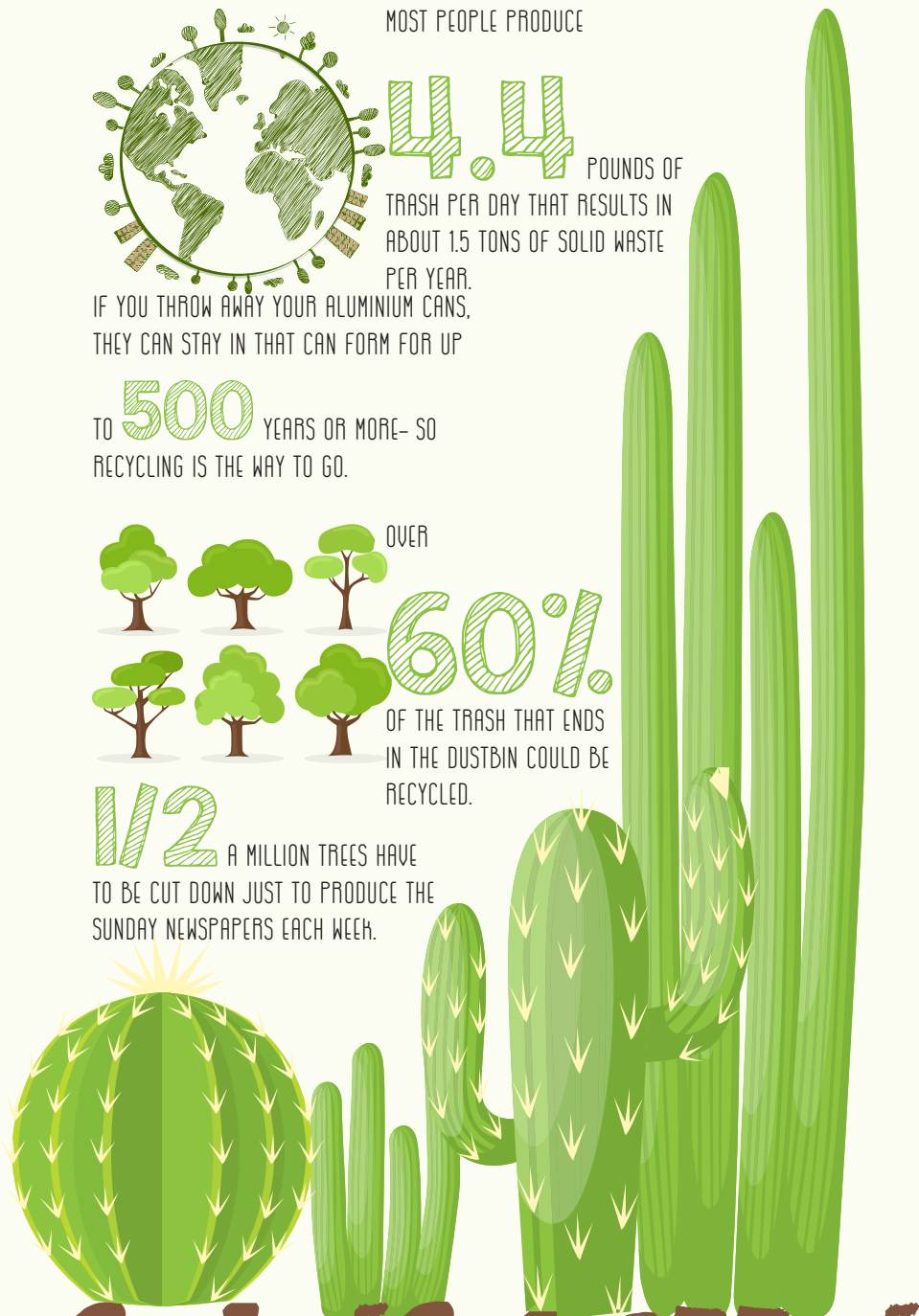
OVER

60%

OF THE TRASH THAT ENDS IN THE DUSTBIN COULD BE RECYCLED.

1/2

A MILLION TREES HAVE TO BE CUT DOWN JUST TO PRODUCE THE SUNDAY NEWSPAPERS EACH WEEK.



**GOING GREEN**